



SCAFFOLDING & METAL FORMINGS

CATALOGUE1



NASK^{W.L.L.} **SCAFFOLDING**

Powered by **TMS**

T O F C O N T E N T

05 HISTORY

06 CHOICE

07 QUALITY

08 INNOVATION

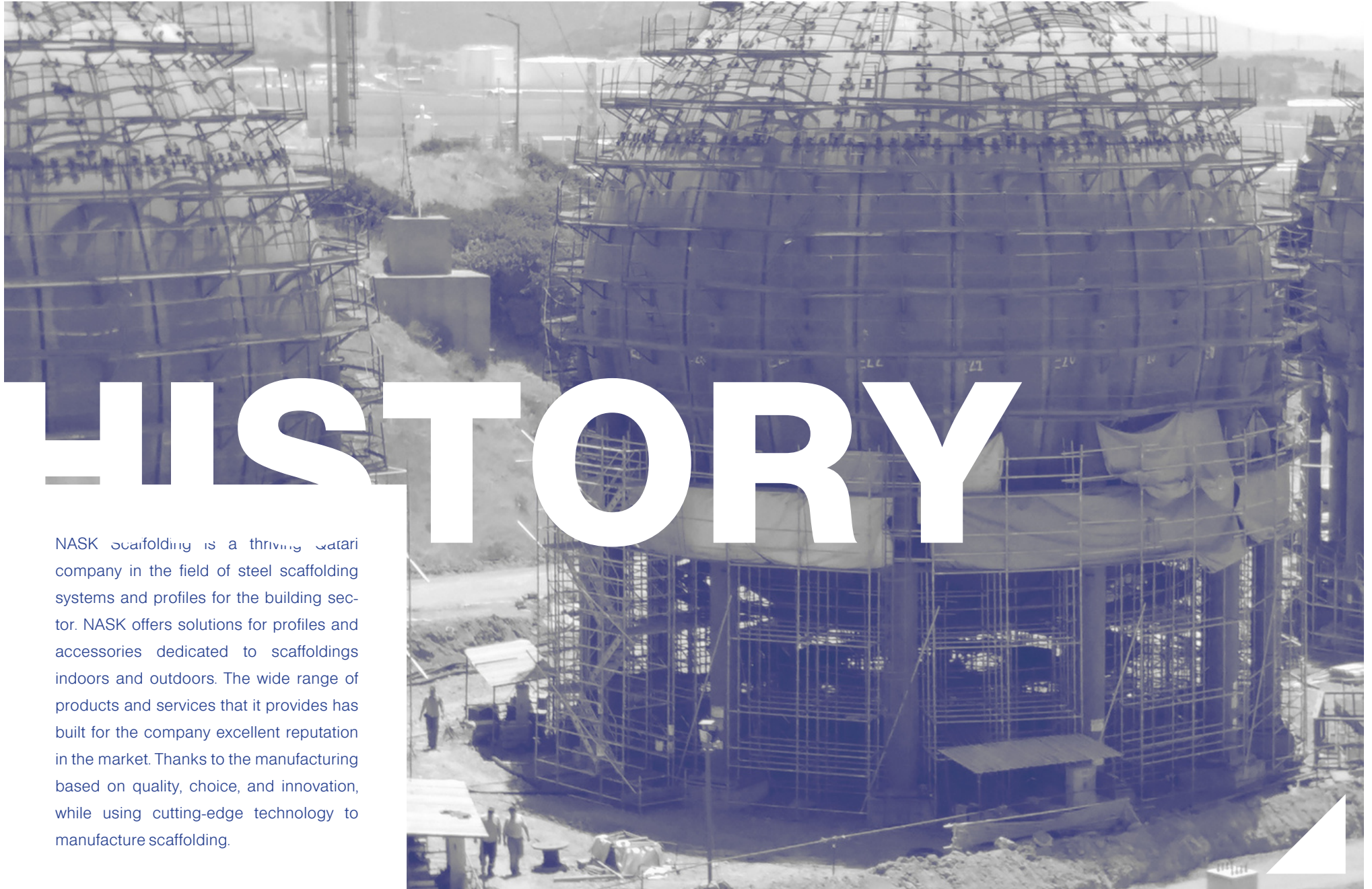
09 PRODUCTS:

KAM'A SHORING SCAFFOLDING

13 GALLERY

14 OTHER POSSIBLE PRODUCTS





HISTORY

NASK scaffolding is a thriving Qatari company in the field of steel scaffolding systems and profiles for the building sector. NASK offers solutions for profiles and accessories dedicated to scaffoldings indoors and outdoors. The wide range of products and services that it provides has built for the company excellent reputation in the market. Thanks to the manufacturing based on quality, choice, and innovation, while using cutting-edge technology to manufacture scaffolding.

A low-angle photograph of a building under construction, completely encased in a complex network of metal scaffolding. The sky is visible in the background, and a window is partially visible on the right side of the building.

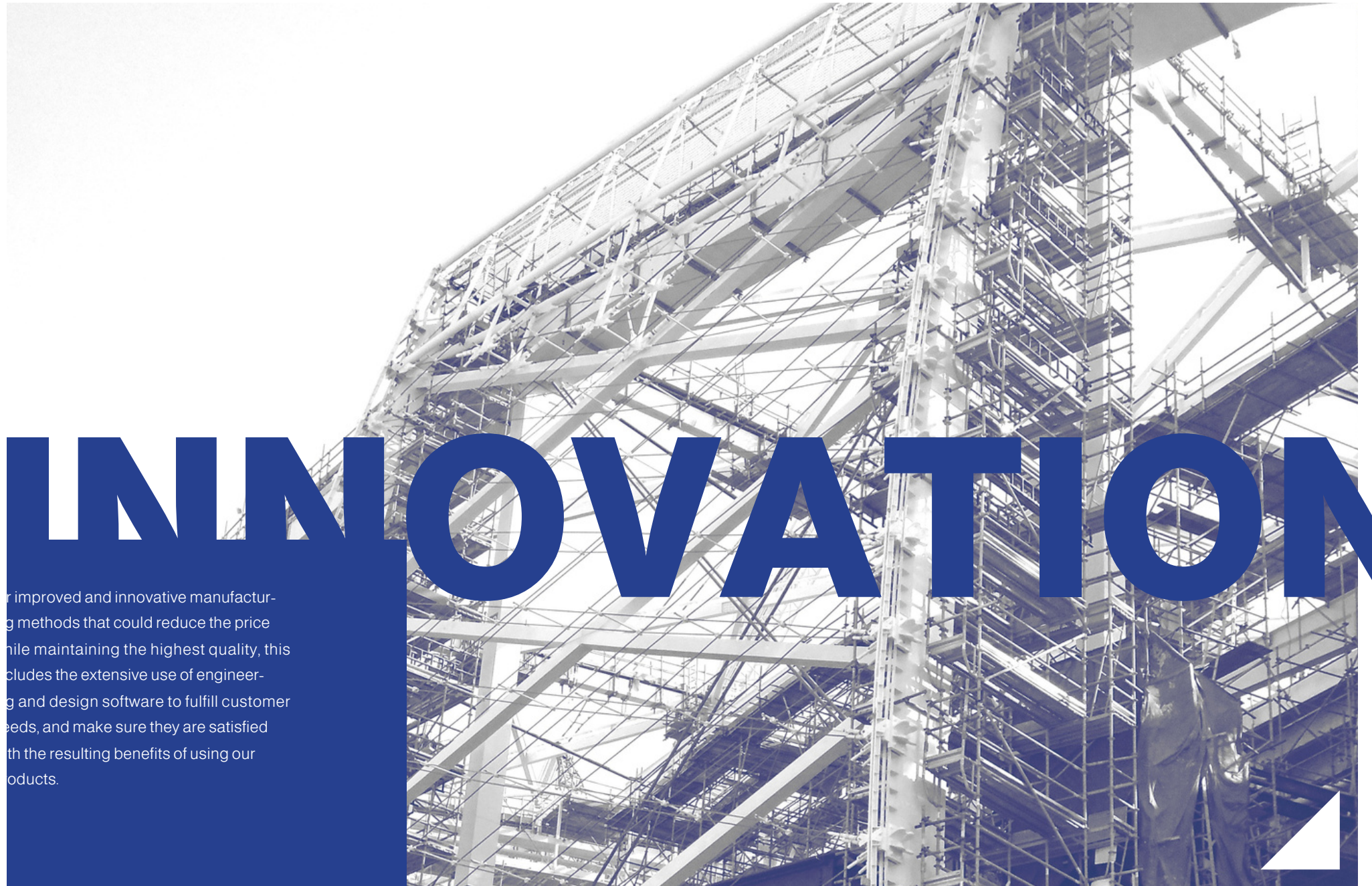
CHOICE

To respond to any request, NASK offers a wide range of profiles and accessories using steel material and standardized product dimensions that are modular for ease of erection and dismantling. Through advance production line, and huge internal and external storage capacity, NASK can satisfy customers' requests rapidly. And with the help of our extensive distribution network, we can provide our products all over our main market in Qatar, the gulf region, and the middle east.



QUALITY

Both at the level of quality of the offered products and the raw materials used in manufacturing, NASK honors its commitment to provide the clients with products of an impeccable level of quality. And this commitment extends to choosing our suppliers and partners who we select for their capabilities in their field. This constant search for the best allows us to follow the well-known standards, and make sure that our products are of utmost quality, with extensive quality testing during the manufacturing and finishing of the products.

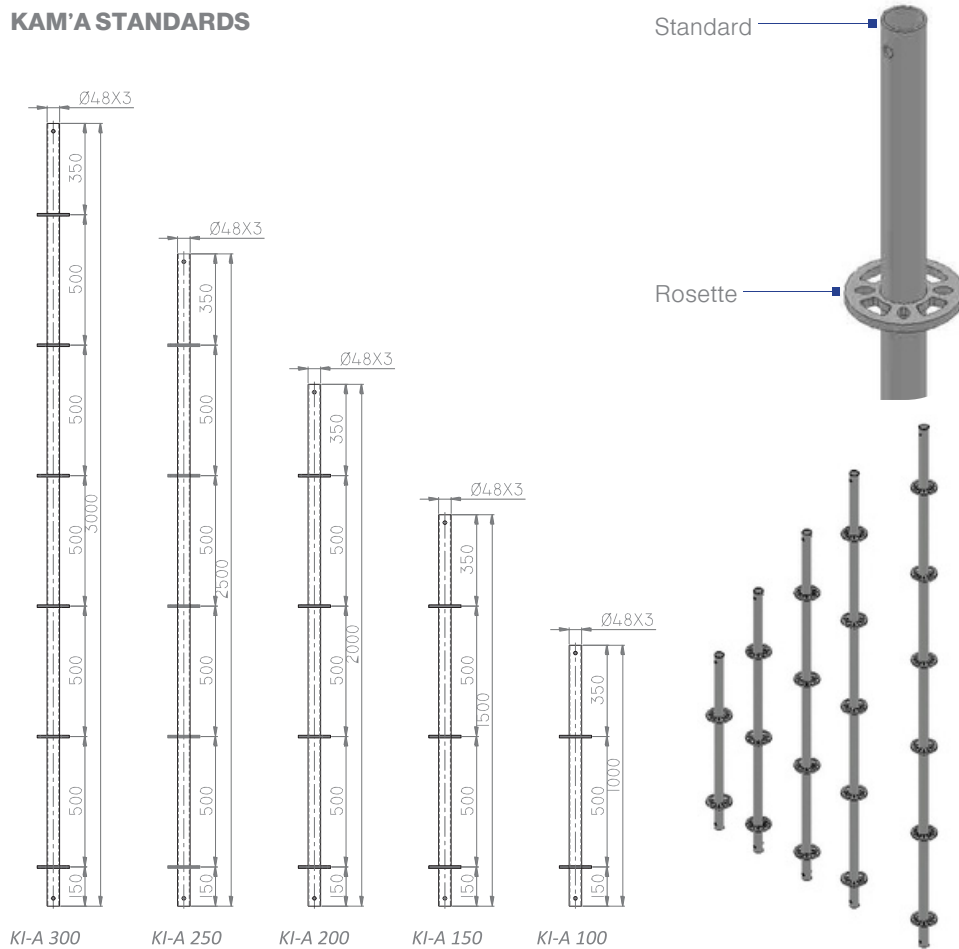


INNOVATION

For improved and innovative manufacturing methods that could reduce the price while maintaining the highest quality, this includes the extensive use of engineering and design software to fulfill customer needs, and make sure they are satisfied with the resulting benefits of using our products.

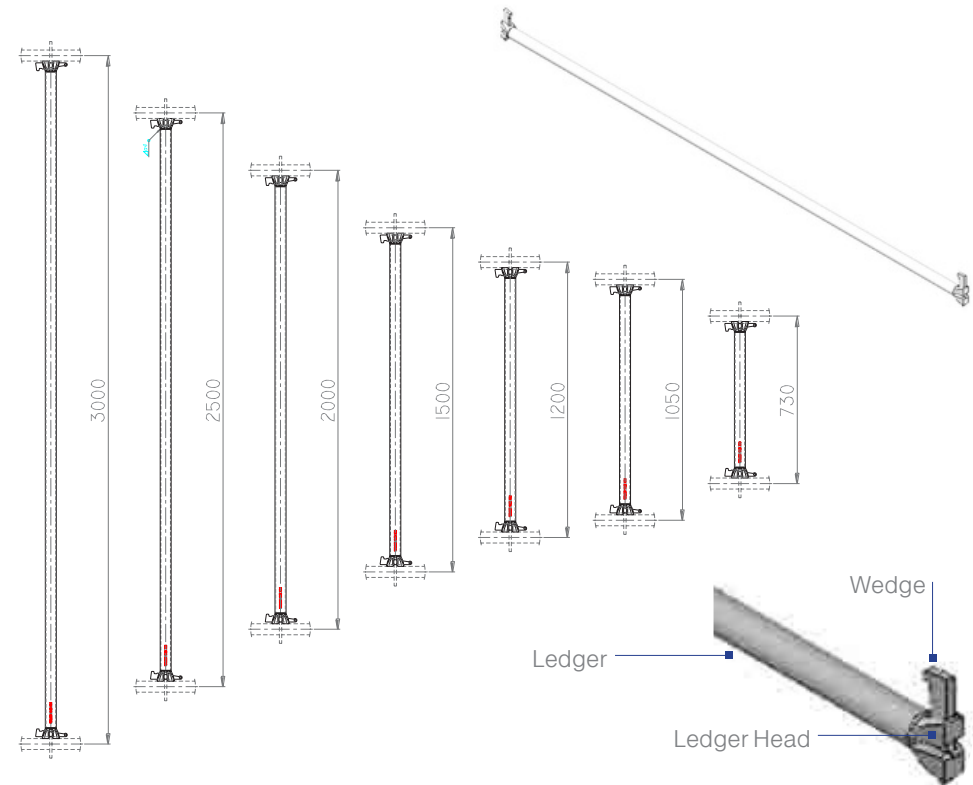
KAM'A SHORING & SCAFFOLDING

KAM'A STANDARDS



Stock Name	Stock Code	Material Description	Unit Weight (kg)
NKI-A G 100	N010 118 00100	Kam'a Standards, 100	4,45
NKI-A G 150	N010 118 00150	Kam'a Standards, 150	6,68
NKI-A G 200	N010 118 00200	Kam'a Standards, 200	8,90
NKI-A G 250	N010 118 00250	Kam'a Standards, 250	11,13
NKI-A G 300	N010 118 00300	Kam'a Standards, 300	13,35

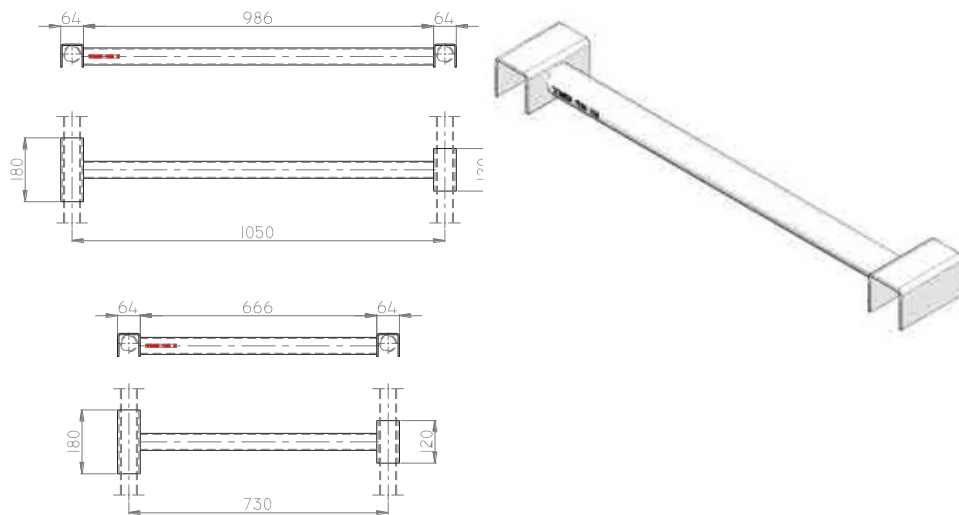
KAM'A LEDGER & TRANSOM



Stock Name	Stock Code	Material Description	Unit Weight (kg)
NKI-Y G 73	N010 118 01073	Kam'a Ledger & Transom 73	2,75
NKI-Y G 105	N010 118 01105	Kam'a Ledger & Transom 105	3,85
NKI-Y G 120	N010 118 01120	Kam'a Ledger & Transom 120	4,04
NKI-Y G 150	N010 118 01150	Kam'a Ledger & Transom 150	4,88
NKI-Y G 200	N010 118 01200	Kam'a Ledger & Transom 200	6,29
NKI-Y G 250	N010 118 01250	Kam'a Ledger & Transom 250	7,70
NKI-Y G 300	N010 118 01300	Kam'a Ledger & Transom 300	9,11

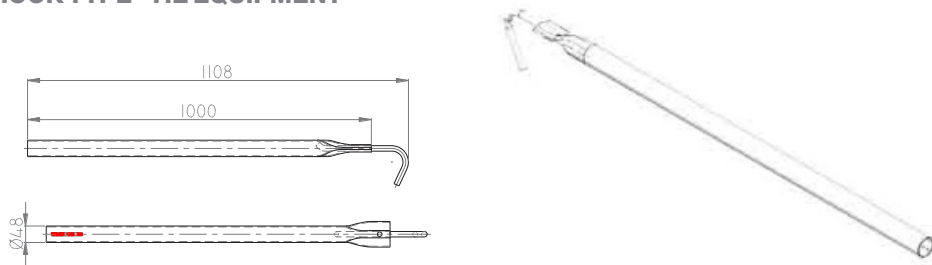
KAM'A SHORING & SCAFFOLDING

TRANSOM



Stock Name	Stock Code	Material Description	Unit Weight (kg)
NKI-G G 73	N010 118 02073	Transom 73	2,80
NKI-G G 105	N010 118 02105	Transom 105	3,90

HOOK TYPE - TIE EQUIPMENT



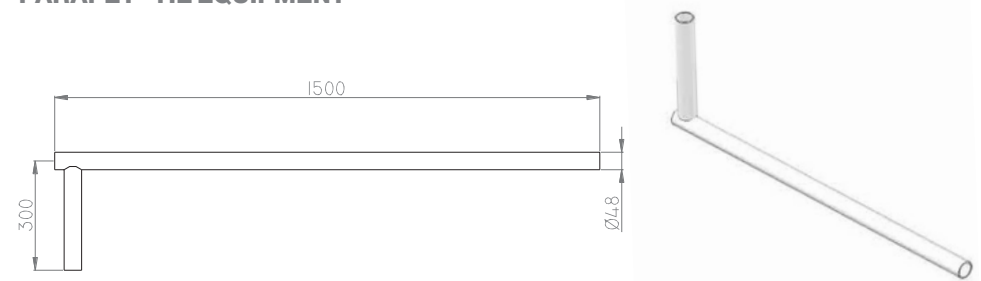
Stock Name	Stock Code	Material Description	Unit Weight (kg)
NSF-B G 100	N010 122 02667	ScafFAST-D Hook Type Tie Equipment 100	4,82

DIAGONAL BRACING



Stock Name	Stock Code	Material Description	Unit Weight (kg)
NKI-C G 150x150	N010 118 13150	Kam'a Diagonal Element 150x150	8,48
NKI-C G 200x150	N010 118 13200	Kam'a Diagonal Element 200x150	9,47
NKI-C G 250x150	N010 118 13250	Kam'a Diagonal Element 250x150	10,73
NKI-C G 150x200	N010 118 03150	Kam'a Diagonal Element 150x200	9,41
NKI-C G 200x200	N010 118 03200	Kam'a Diagonal Element 200x200	10,44
NKI-C G 250x200	N010 118 03250	Kam'a Diagonal Element 250x200	10,87

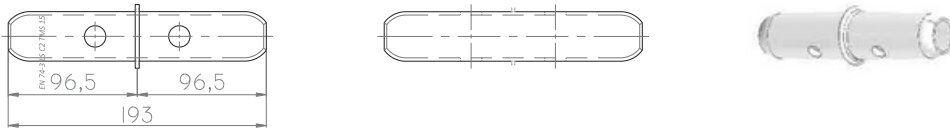
PARAPET - TIE EQUIPMENT



Stock Name	Stock Code	Material Description	Unit Weight (kg)
NIS-B G	N010 122 00132	Parapet Tie Equipment	3,70

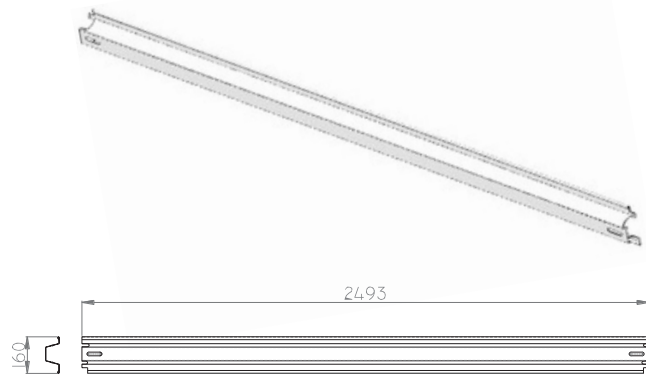
KAM'A SHORING & SCAFFOLDING

KAM'A STANDARD CONNECTOR



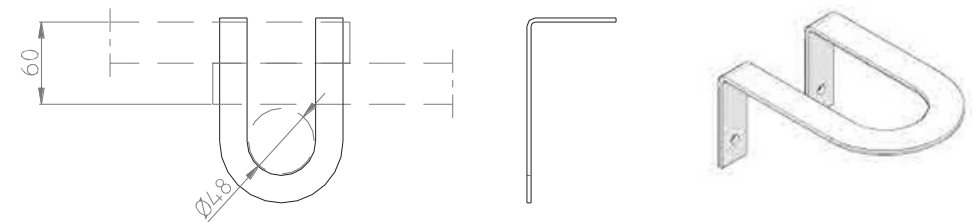
Stock Name	Stock Code	Material Description	Unit Weight (kg)
NKP-E B	N010 017 01680	Scaffolding Connector, for Ø48, TS EN 73-1	0,73

TOE BOARD (STEEL)



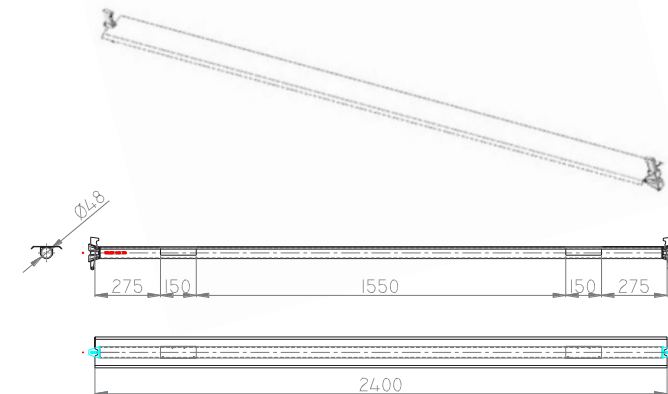
Stock Name	Stock Code	Material Description	Unit Weight (kg)
NKP-S G 75	N010 117 02680	Kup'a - Kam'a Steel Toeboard, 75	1,45
NKP-S G 100	N010 117 02681	Kup'a - Kam'a Steel Toeboard, 100	1,85
NKP-S G 125	N010 117 02682	Kup'a - Kam'a Steel Toeboard, 125	2,30
NKP-S G 150	N010 117 02683	Kup'a - Kam'a Steel Toeboard, 150	2,70
NKP-S G 200	N010 117 02684	Kup'a - Kam'a Steel Toeboard, 200	3,55
NKP-S G 250	N010 117 02685	Kup'a - Kam'a Steel Toeboard, 250	4,40
NKP-S G 300	N010 117 02686	Kup'a - Kam'a Steel Toeboard, 300	5,25

KICKER HOLDER



Stock Name	Stock Code	Material Description	Unit Weight (kg)
NSF-T B	N010 022 02679	ScaffFAST-D Toeboard Frame Connector 0,34	

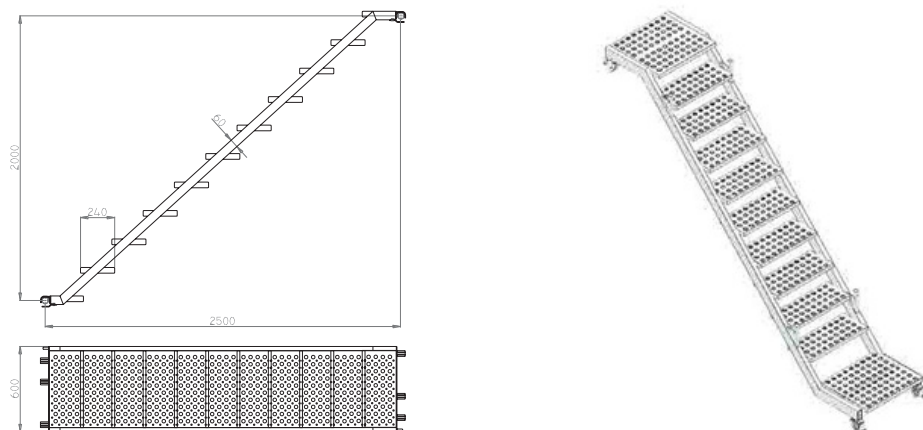
BAND PLATFORM



Stock Name	Stock Code	Material Description	Unit Weight (kg)
NKP-B G 112	N010 120 313112	Band Platform 120	2,10
NKP-B G 115	N010 120 313115	Band Platform 150	2,45
NKP-B G 120	N010 120 313120	Band Platform 200	3,25
NKP-B G 125	N010 120 313125	Band Platform 250	4,00
NKP-B G 130	N010 120 313130	Band Platform 300	4,95

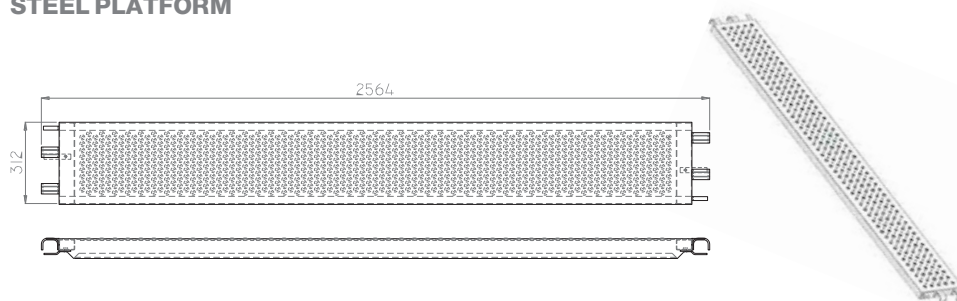
KAM' A SHORING & SCAFFOLDING

FACADE SCAFFOLD STAIR



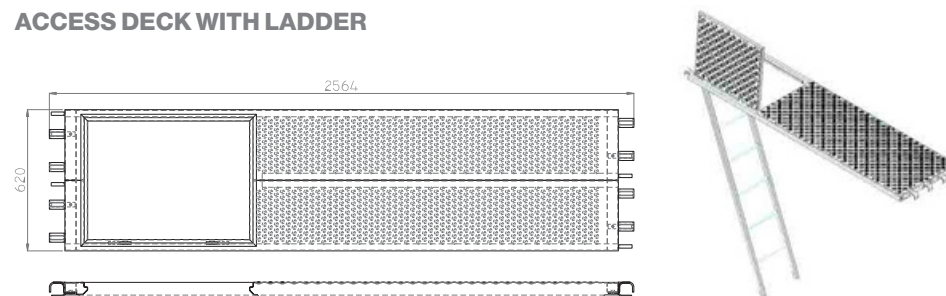
Stock Name	Stock Code	Material Description	Unit Weight (kg)
NKP-M G	N010 117 01690	ScaffAST-D Facade Scaffold Stairs	49,50

STEEL PLATFORM



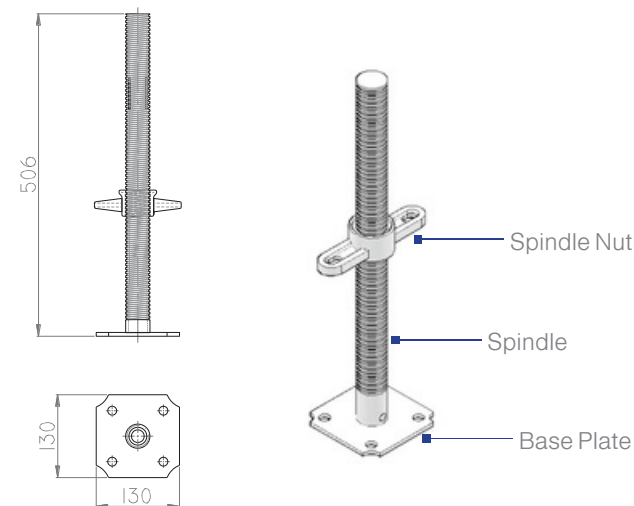
Stock Name	Stock Code	Material Description	Unit Weight (kg)
NKL-B G 312	N010 120 13012	Steel Platform 312, 30x120 cm	9,90
NKL-B G 315	N010 120 13015	Steel Platform 315, 30x150 cm	12,25
NKL-B G 320	N010 120 13020	Steel Platform 320, 30x200 cm	16,50
NKL-B G 325	N010 120 13025	Steel Platform 325, 30x250 cm	19,90
NKL-B G 330	N010 120 13030	Steel Platform 330, 30x300 cm	24,20

ACCESS DECK WITH LADDER



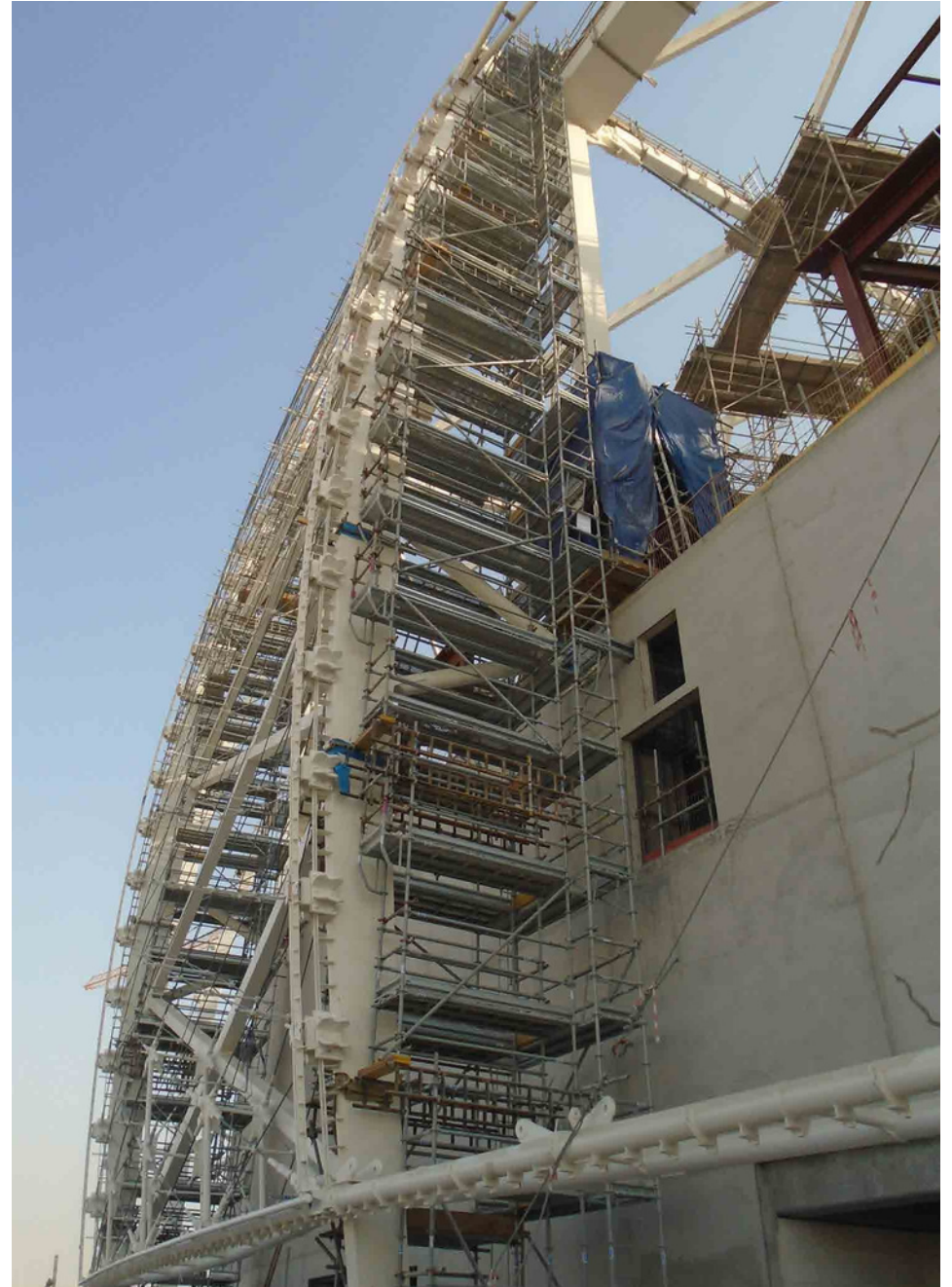
Stock Name	Stock Code	Material Description	Unit Weight (kg)
NMP-B G 625	N010 120 16025	Access Deck with Ladder 625, 60x250	58,67

BASE SPINDLE

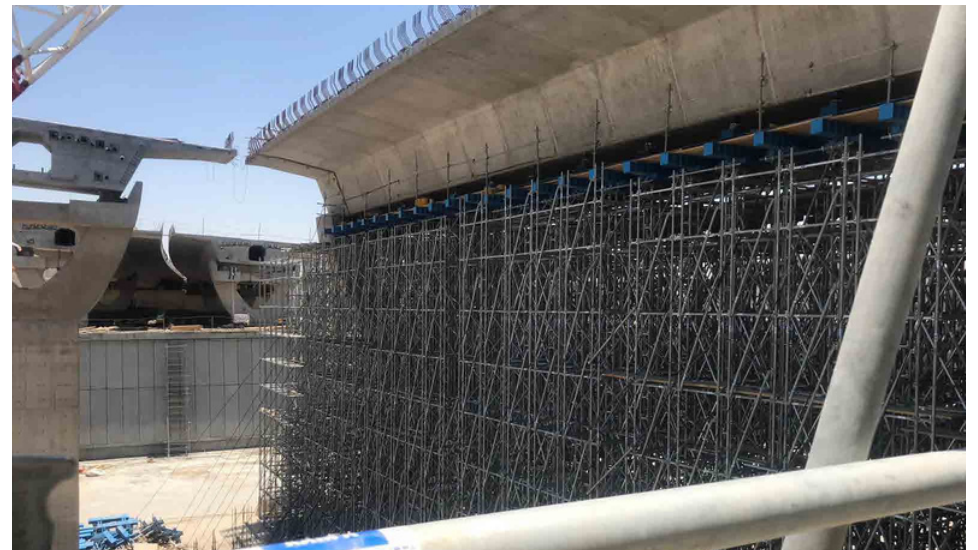


Stock Name	Stock Code	Material Description	Unit Weight (kg)
NMA-A G 38x500 bru.	N010 113 03805	Base Spindle, Ø38x500, Tube	2,75
NMA-A G 38x600 bru.	N010 113 03806	Base Spindle, Ø38x600, Tube	3,08
NMA-A G 38x750 bru.	N010 113 03807	Base Spindle, Ø38x750, Tube	3,59









OTHER POSSIBLE PRODUCTS

HEAT EXCHANGER



PRESSURE VESSEL

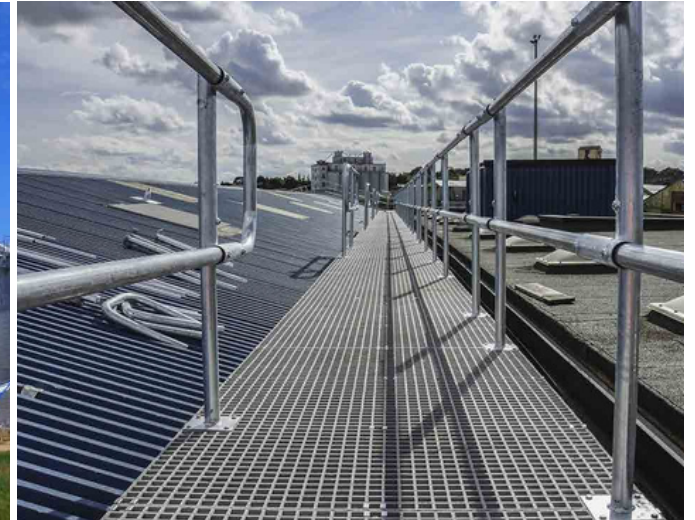


OTHER POSSIBLE PRODUCTS

SILOS



STEEL PLATFORM




TANKS



The logo for 'empower' features a stylized 'E' composed of three red horizontal bars of varying lengths, followed by the word 'empower' in a black, lowercase, sans-serif font. The background of the entire advertisement is a dark, industrial scene showing a welder in a protective suit and helmet, working on a large metal component. Bright sparks are visible from the welding process, and the overall atmosphere is one of intense industrial activity.

 #45-55, Block D,
Elite Business Zone Investment,
Mussafah Industrial Area 44,
Abu Dhabi - UAE.

 [+9712 5544933](tel:+97125544933)

 rfq@empower.abudhabi

**THE ONLY WAY TO
UNCOVER LIMITS IS
TO GO BEYOND THEM**

